

GRAND OSAGE

The Grand Osage Wildlife Area is located three miles southeast of Parsons in the rolling hills of the Osage Questas Region in Labette County. The property is a restricted use area best known for high-quality special hunt opportunities.

The property was originally owned and managed by the U.S. Army as the Kansas Army Ammunition Plant, which operated from 1941 through 2010. The Army closed the facility, along with others, to consolidate operations for efficiency. The Kansas Department

of Wildlife and Parks (KDWP) purchased 3,000 acres of the site and manages another 6,615 acres owned by the Great Plains Development Authority (GPDA). The remaining 4,112 acres were acquired by DZI, a privately owned munitions manufacturer.

WILDLIFE

This diverse property features upland and floodplain forests, scattered native prairie tracts, cropland, wetlands, riparian forests, woodlands, shrublands and scattered fescue tracts. Common wildlife includes deer, turkey, waterfowl, gray and fox squirrels, cottontail rabbits, doves and quail. Furbearers such as bobcats, otters,

raccoons, beavers, muskrats, striped skunks and opossums are also present. The area's unique habitats – including wet areas, rock outcrops, and 22 miles of mostly intermittent streams – support a variety of nongame species, including reptiles, amphibians, mollusks, small mammals such as flying squirrels, and numerous birds.

FISHERY

Several fisheries studies are ongoing on the property. The restricted area is unique, minimizing human-related variables typically found in unrestricted wildlife

areas. Fishing opportunities are currently restricted to events associated with youth turkey and deer hunts.

ACCESS

Entry to the adjoining munitions facility and Great Plains Industrial Park requires specific protocols, including regulated activities within the shared 13,727-acre footprint. Safety meetings and/or escorted access are typically required prior to entry. Limited access is managed through the KDWP Special Hunts program, which offers youth deer hunts, antlerless deer hunts, either-sex archery deer hunts, quail hunts, furbearer hunts, youth spring turkey hunts and open spring turkey hunts.

MANAGEMENT

Converting fescue pastures to warm season native grasses is a priority for the property. Maintaining and increasing forest openings improves diversity and provides important ground cover in a primarily canopied environment. Noxious weeds are selectively controlled, and prescribed fire is used to control succession, with

1,000 to 2,500 acres burned annually. Wildlife survey results are used to help determine hunter numbers and set harvest goals. Cropland acreage and multiple food plots enhance existing food sources for wildlife, with two to three fields planted with sunflowers each year specifically for dove hunts.

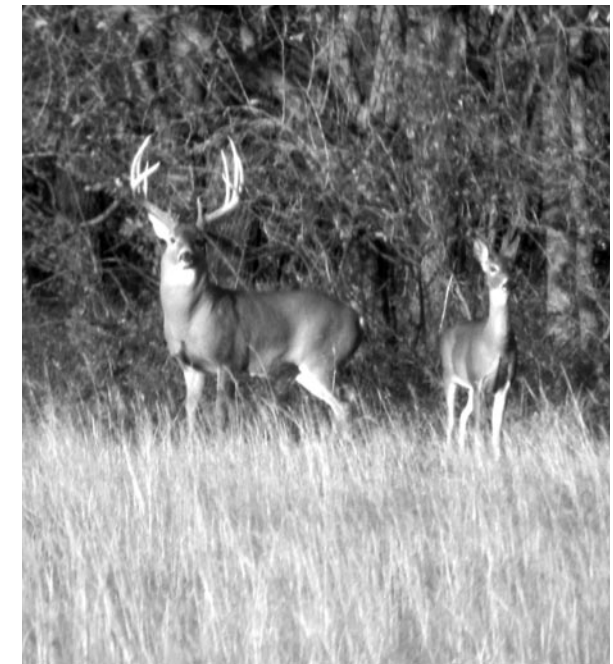
THINGS TO REMEMBER

- Many abandoned buildings remain on the GPDA footprint; however, entry is prohibited inside the chain-link fence enclosures.
- Outdoor recreational activities are allowed only with a Special Permit.
- Access is permitted only through the main gates.
- Vehicles are restricted to maintained roads.
- The property footprint is shared with DZI, which is actively producing and storing munitions. Access to their property is strictly prohibited.
- Camping is not allowed.

Grand Osage

Wildlife Area

RESTRICTED ACCESS PROPERTY



General Area Map

Equal opportunity to benefit from programs described herein is available to all persons without regard to race, color, gender, sexual orientation, gender identity or expression, religion, national origin, ancestry, age, military or veteran status, disability status, marital or family status, genetic information or political affiliation. Concerns of discrimination should be sent to KDWP, 1020 S Kansas Ave., Topeka, KS 66612. 11/24



Grand Osage WA
1929 19000 Rd.,
Parsons, KS 67357

Area Office

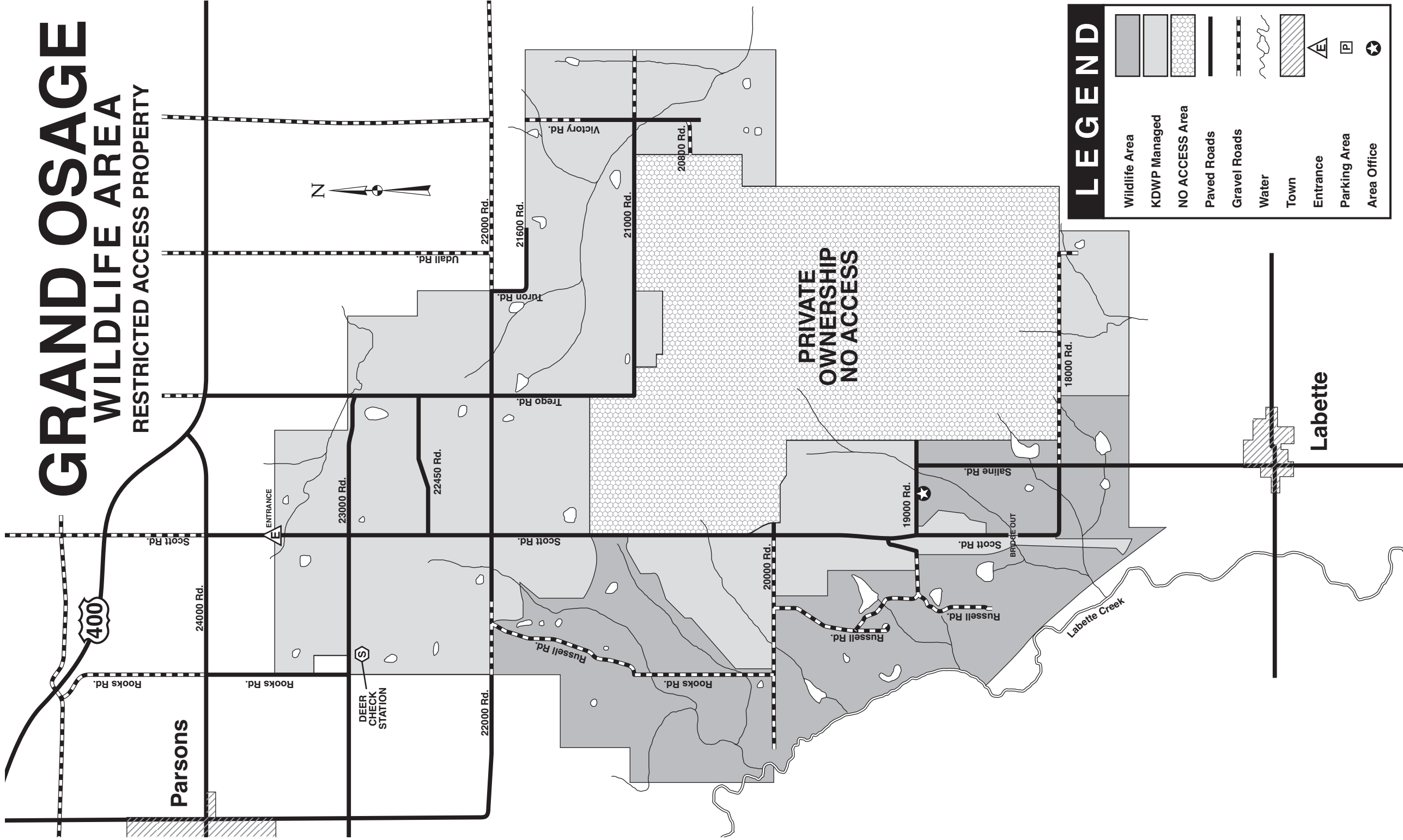
Regional Office
(620) 431-0380

www.ksoutdoors.com

GRAND OSAGE WILDLIFE AREA

RESTRICTED ACCESS PROPERTY

Parsons



LEGEND

	Wildlife Area		NO ACCESS Area
	KDWP Managed		Paved Roads
	NO ACCESS Area		Gravel Roads
	Paved Roads		Water
	Gravel Roads		Town
	Water		Entrance
	Town		Parking Area
	Entrance		Area Office
	Parking Area		
	Area Office		