

2025 Pronghorn Production Surveys

PERFORMANCE REPORT STATEWIDE WILDLIFE RESEARCH AND SURVEYS

A Contribution of Pittman-Robertson Funds
Federal Aid in Wildlife Restoration

Grant W-39-R-31

Kansas Department of Wildlife and Parks

Christopher Kennedy
Secretary

Prepared by

Matt Peek
Wildlife Research Biologist

Jake George
Wildlife Division Director

Jon Beckmann
Wildlife Research Supervisor



August 2025

2025 Pronghorn Production Surveys

Matt Peek
pronghorn program coordinator

The 2025 aerial pronghorn production surveys have been completed. These surveys are conducted in each of the three pronghorn hunting units with a target date range of July 15-31, but pushing into the first half of August as needed. These surveys are intended to evaluate sex and age ratios of the population and are not intended to be population estimates. With smaller average herd size and habitat conditions typically less favorable for observing pronghorn, pronghorn visibility is lower during production surveys than during the winter counts, which have traditionally been used to determine population size.

Total numbers of pronghorn observed in each pronghorn hunting unit and their respective buck:doe:fawn ratios are presented in **Table 1**. Survey routes and location of pronghorn observations for hunting units 2, 17 and 18 are provided in **Figures 1-3**, respectively. Trends in buck:doe and doe:fawn ratios since 2001 can be found in **Figures 4 and 5**.

Total buck ratio decreased from 56:100 does in 2024 to 30:100 does this year. The 2024 buck ratio for Unit 2 was an outlier compared to other recent years and should be viewed with some skepticism, but the current rate does fall below our objective of 35 bucks:100 does. In fact, only Unit 17 had buck ratios above that this year.

Total fawn ratios increased slightly from last year and remained above the 5-year average. Precipitation and cover conditions have been generally favorable for several years over much of the range, and it appears the trend of potential recovery is continuing following several years of poor production that apparently resulted in a substantial population decline. Most notably, Unit 18, which had been hardest hit by poor conditions in the recent past, saw good production rates for the third year in a row. Fawn ratios don't greatly influence hunter satisfaction with the current year's hunt since hunters rarely harvest fawns, but they do serve as a predictor of future opportunity.

Table 1. Results of summer 2025 aerial pronghorn production survey for each pronghorn hunting unit.

Unit	Number Observed			Ratio			Ratio – 5 year average		
	Bucks	Does	Fawns	Bucks	Does	Fawns	Bucks	Does	Fawns
2	59	211	103	28	100	49	43	100	43
17	31	75	27	41	100	36	36	100	38
18	23	85	59	27	100	69	22	100	64
Total	113	371	189	30	100	51	38	100	45

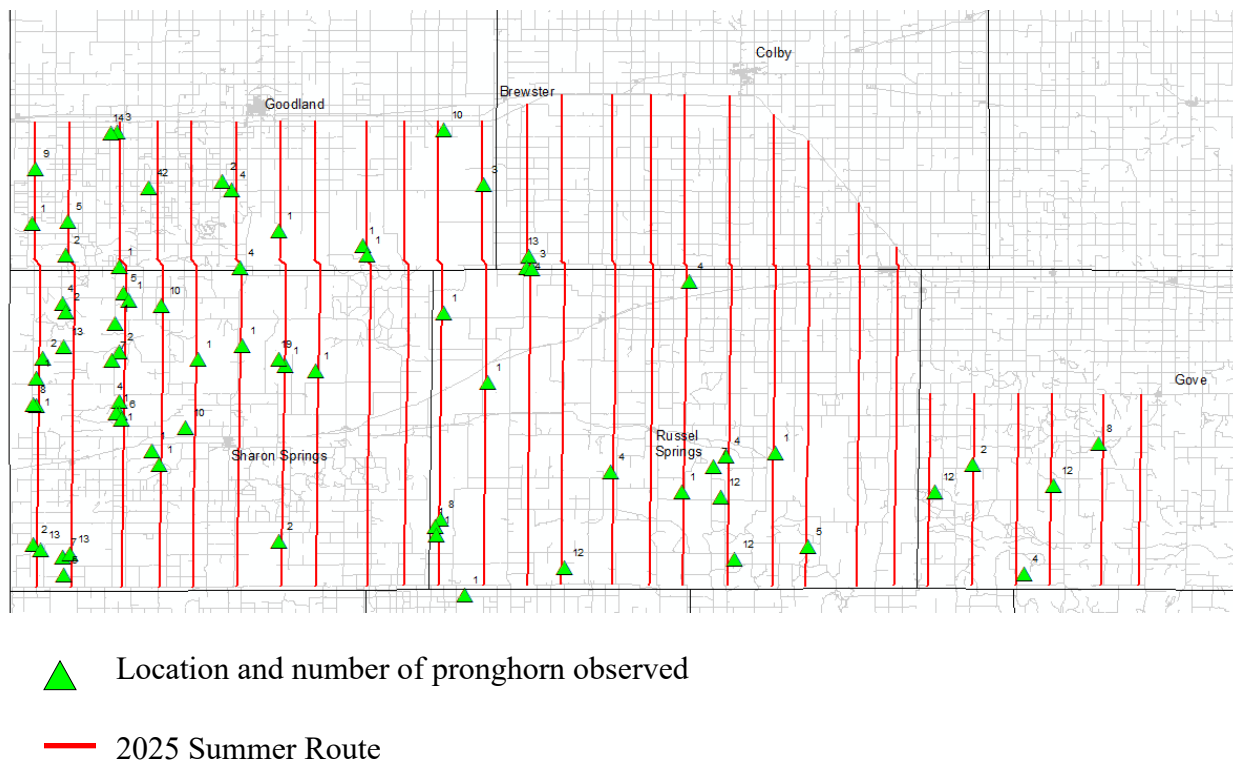


Figure 1. Unit 2 – Survey area and pronghorn observations (Sherman, Wallace, Thomas, Logan, and Gove Counties).

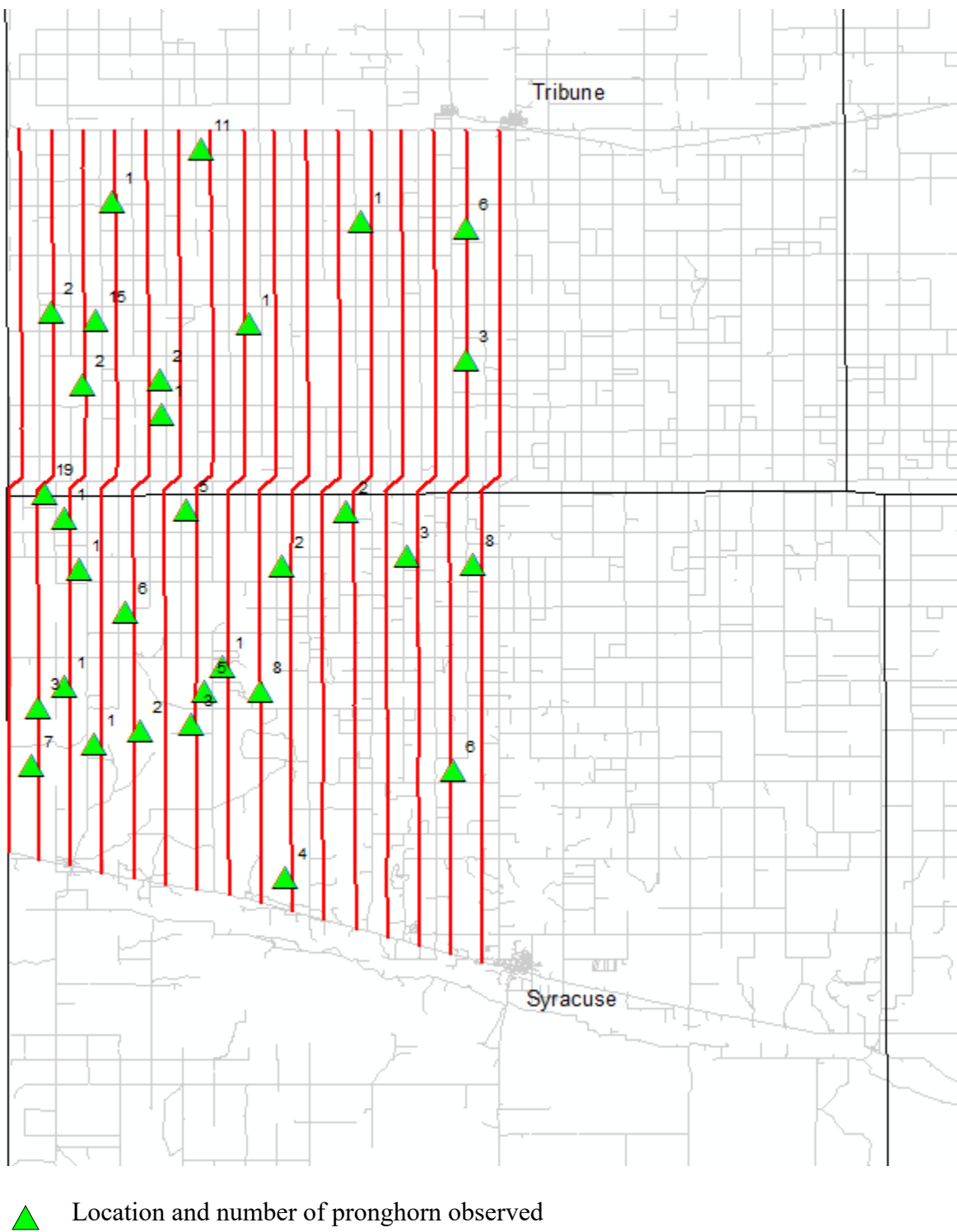


Figure 2. Unit 17 – Survey route and pronghorn observations (Hamilton and Greeley Counties).

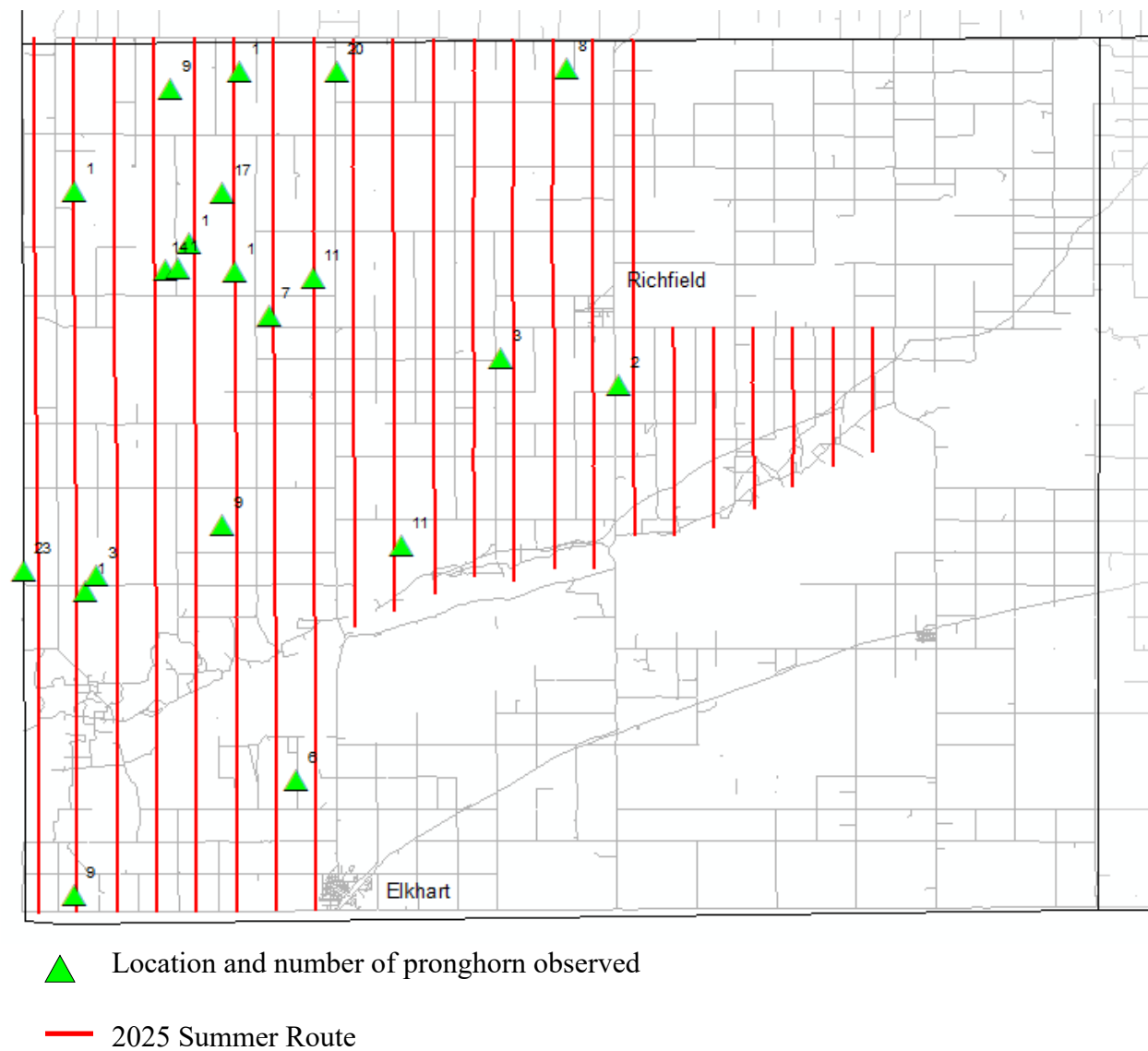


Figure 3. Unit 18 – Survey route and pronghorn observations (Morton County).

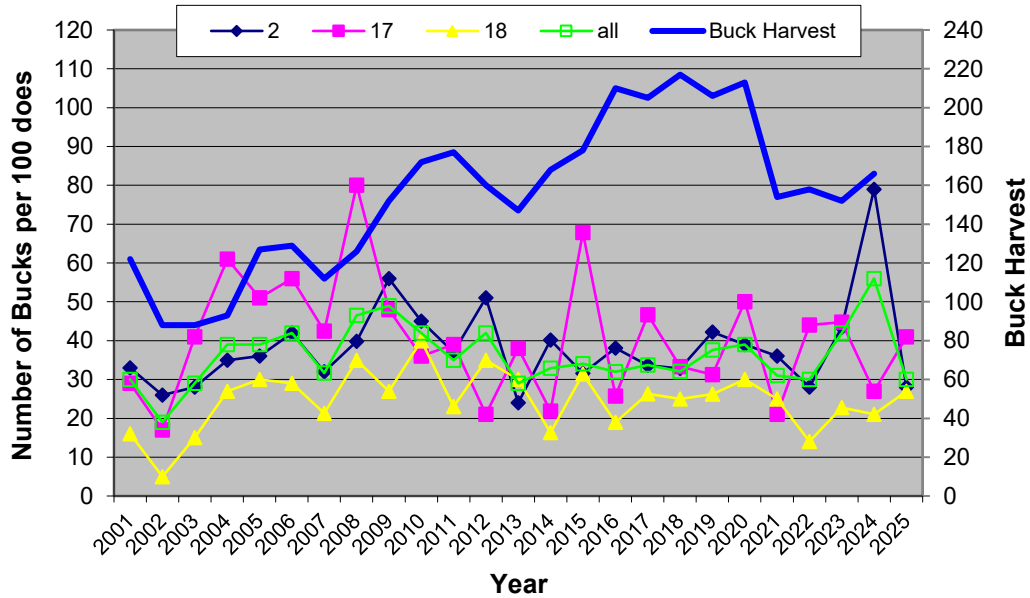


Figure 4. Number of pronghorn bucks per 100 does for each unit since 2001, and total annual buck harvest.

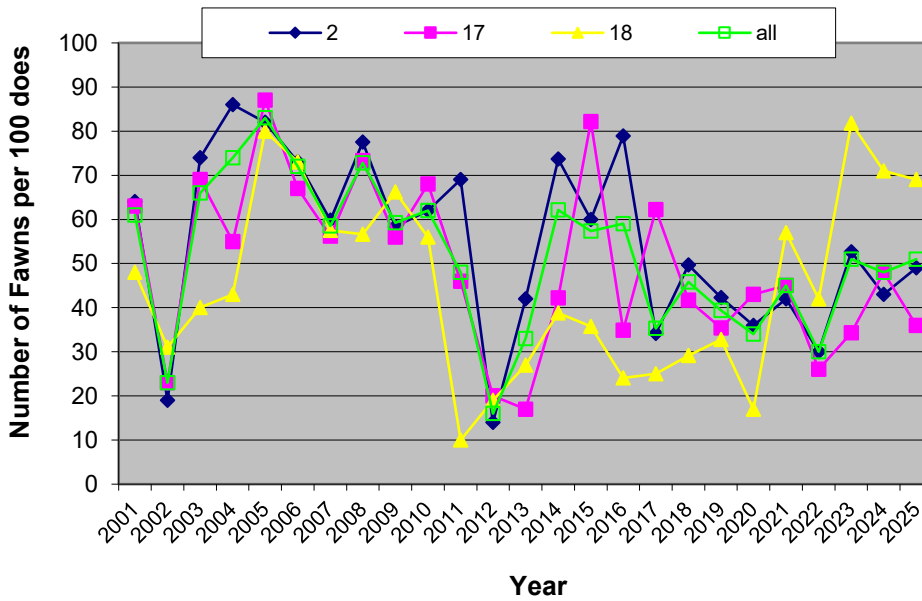


Figure 5. Number of pronghorn fawns per 100 does for each unit since 2001.

EQUAL OPPORTUNITY STATEMENT

This program receives Federal financial assistance from the U.S. Fish and Wildlife Service. Under Title VI of the Civil Rights Act of 1964, Section 504 of the Rehabilitation Act of 1973, Title II of the Americans with Disabilities Act of 1990, the Age Discrimination Act of 1975, and Title IX of the Education Amendments of 1972, the U.S. Department of the Interior and its bureaus prohibit discrimination on the basis of race, color, national origin, age, disability or sex (in educational programs). If you believe that you have been discriminated against in any program, activity or facility, or if you desire further information, please write to:

The U.S. Fish and Wildlife Service
Office of Diversity and Civil Rights Programs- External Programs
4040 North Fairfax Drive, Suite 130
Arlington, VA 22203